

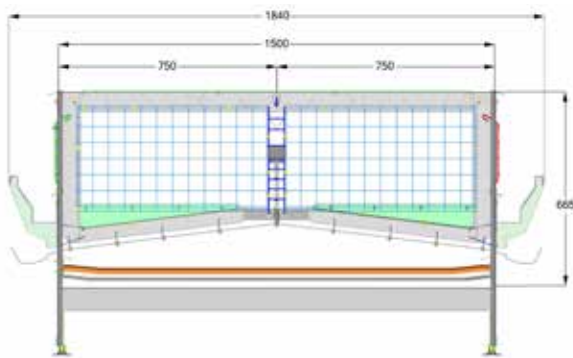
# Enrichable 24-241x75 NF/NR



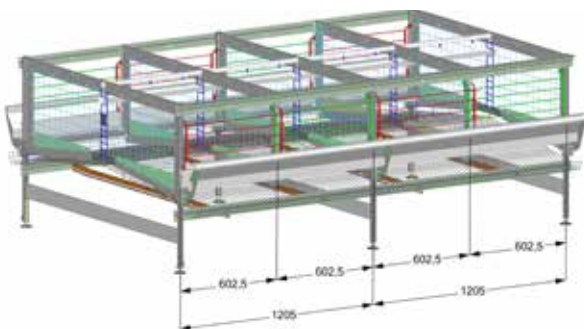
## Enrichable 24-241x75 NF/NR

Compartment length:	241 cm
Compartment depth:	750 mm
Row width:	184 cm
Height 6 tiers:	4.58 m
Tier height:	665 mm

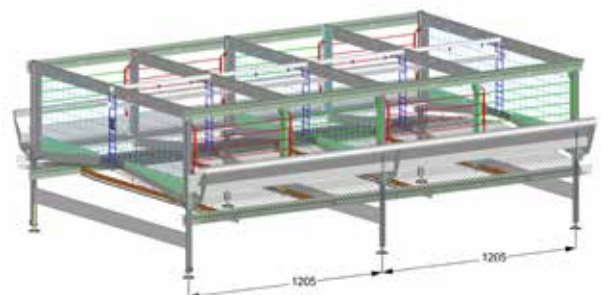
This cage has the advantages of tropical cages and is prepared for possible enrichment in the future. This cage type is higher and provides more space to the birds, thus promoting healthier hens and better egg quality.

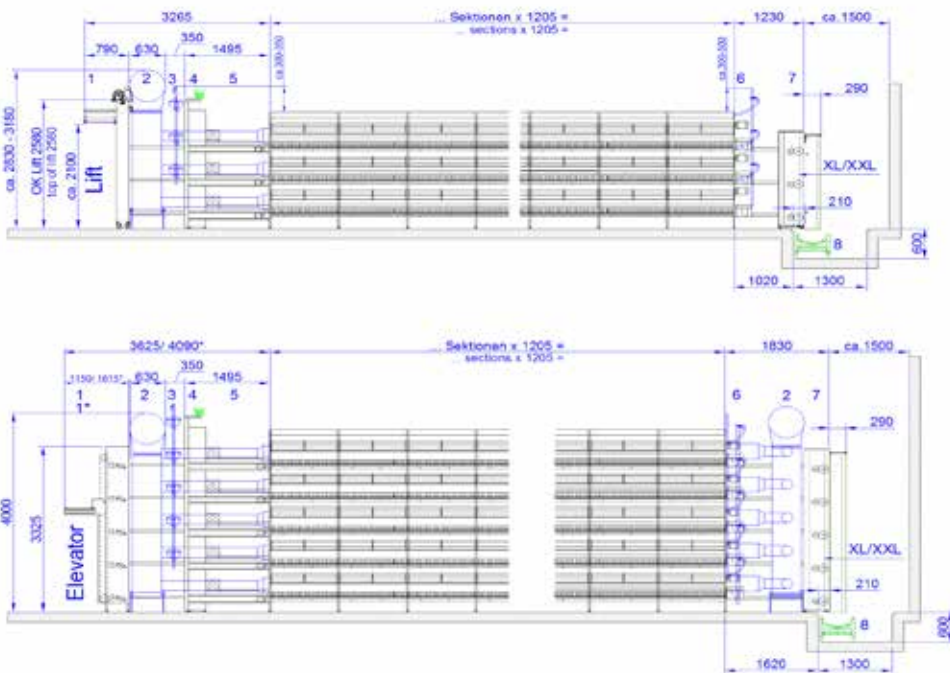
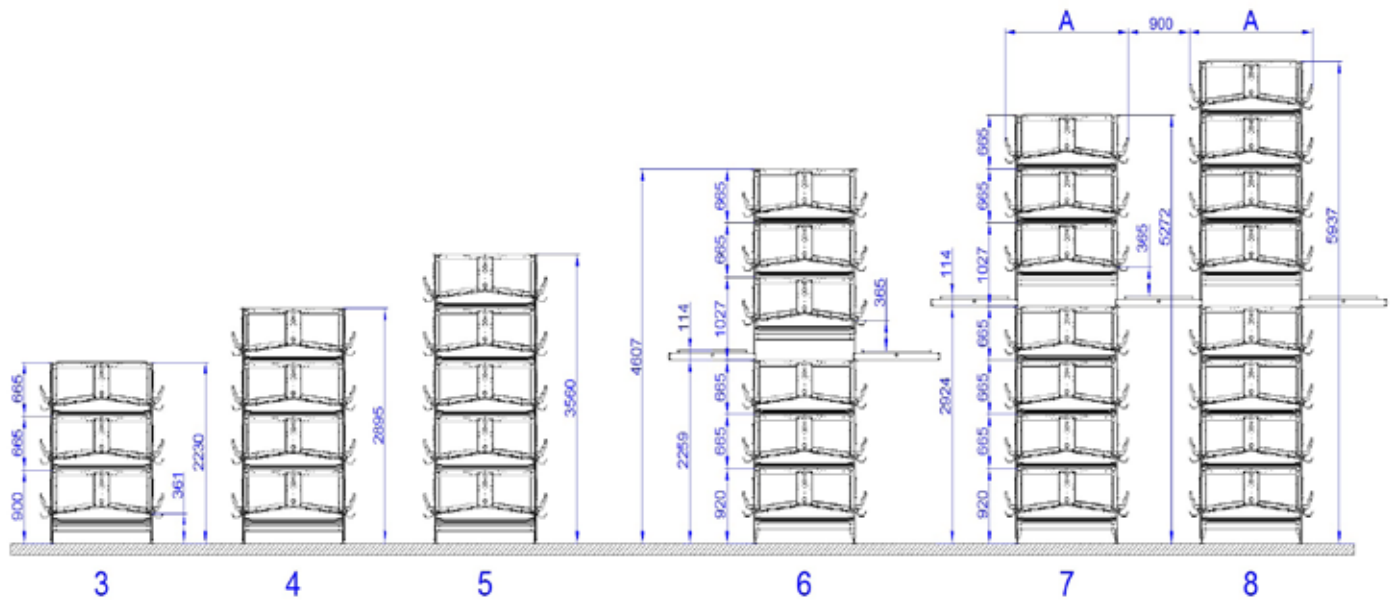


## Enrichable 60 x 75 cm

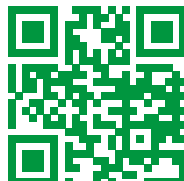
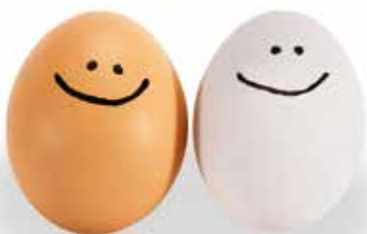


## Enrichable 120.5 x 75 cm





1. Egg collection - lift system elevator  
\*Elevator with simultaneous transfer
2. Air channel
3. Watering system
4. Feeding system
5. Reverse station
6. Reverse station feed chain
7. Drive station
8. Cross conveyor belt



**HELLMANN**  
POULTRY EQUIPMENT

Made in Germany.

Hellmann Poultry GmbH & Co. KG • Alter Flugplatz 50 • 49377 Vechta  
P.O. BOX 1232 • 49361 Vechta • Germany • Phone +49 4441 9259-0  
Fax +49 4441 9259-50 • www.hellmannpoultry.com