



**Eggcellence.**  
Made in Germany.

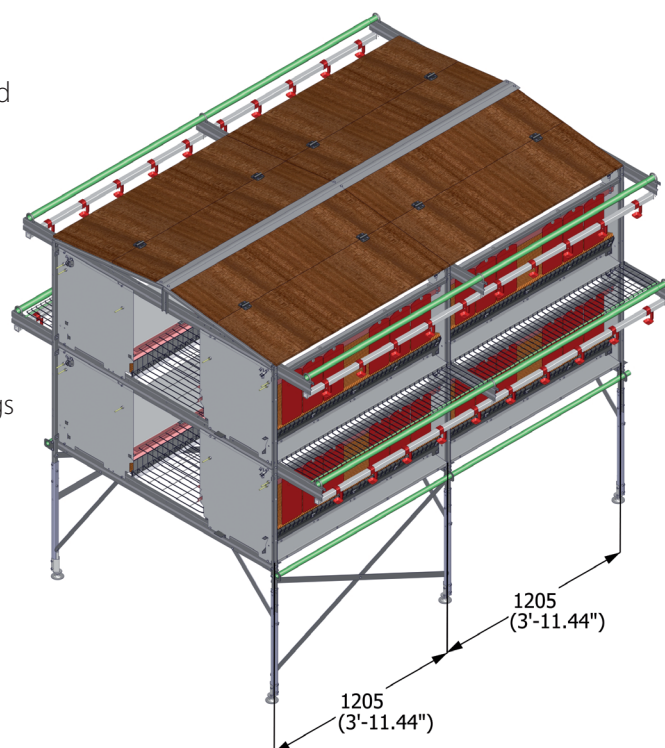
## PRO Nest System

### *Automatic laying nest for cage-free egg production*

The PRO Nest is a combination of our innovative Hellmann laying nest and an additional slat system for use in a typical floor production unit. The nest's sturdy design and high-quality components ensure a long service life, which makes the nest an economical solution for any producer. The individual sections with supports every 1205 mm (3'-11.4") are equipped with adjustable setting screws, which are optionally also available in stainless steel.

To accommodate small or large flocks alike, the nest is available as single or double-tier nest and its design allows for an increase of the usable area through an optional addition of plywood flooring on the roof.

The nests stable curtains always remain in shape to ensure that the hens always have a dark quiet place to lay the eggs. The curtains between nest and egg belt ensure that the eggs are not visible for the birds, which in turn increases the production yield of first class sellable eggs.



**Tilting floor for gentle removal of hens**

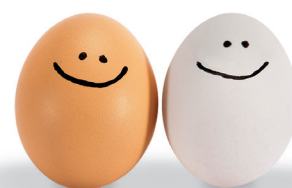
**Less dirt inside the nest increases egg quality**

**Closed nest mats for optimum nest acceptance**

**Optional dirt protection belt over egg belt**

**Easy to clean as nest floor does not have to be removed**

**Integrated drinking line support**



# PRO Nest System

*Less dirt, less work, better eggs*

**ALSO AVAILABLE AS  
2-TIER NEST**

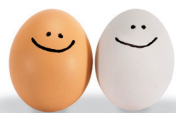
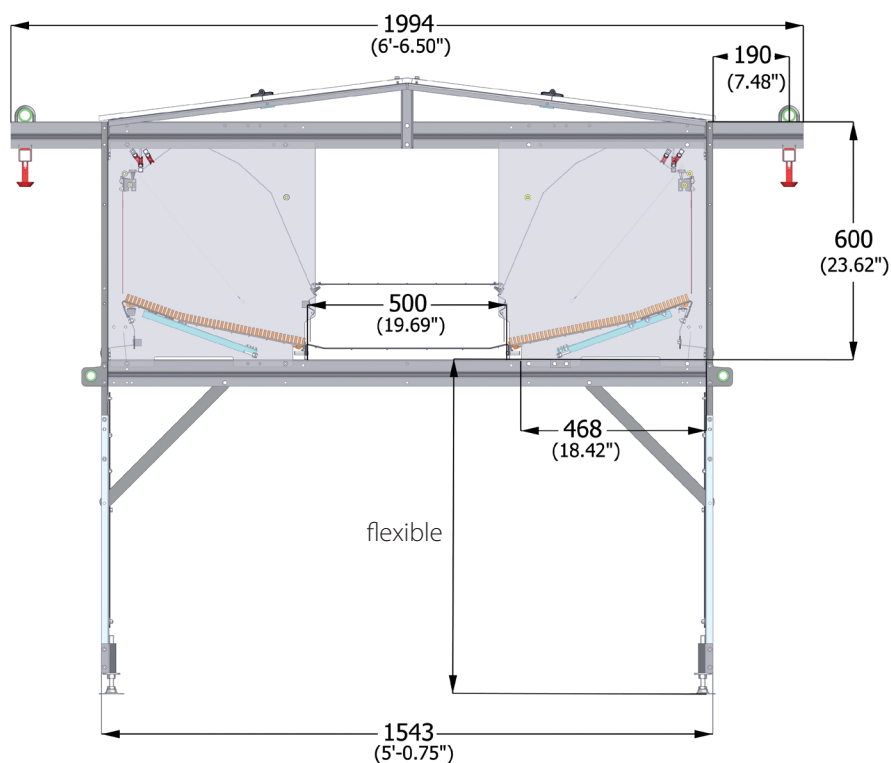


Section length: 1205 mm | 3'-11.4"

Section width: 1543 mm | 5'-0.75"

Nest depth: 468 mm | 18.42"

System height: flexible



**Hellmann Poultry GmbH & Co. KG**  
Alter Flugplatz 50 · D-49377 Vechta · Germany  
P.O. BOX 1232 · D-49361 Vechta · Germany  
Phone +49 4441 9259-0 · Fax +49 4441 9259-50